



Spencer.

45, Walkley Road, Sheffield, S6 2XL

Buy —

this superbly-presented and deceptively-proportioned, three double bedroom, two bathroom, mid-terrace home

— from *Spencer.*

-
- Deceptively spacious mid-terrace home
 - Three double bedrooms
 - Open plan lounge dining room with feature fireplaces
 - Good sized modern off-shot kitchen equipped with appliances
 - Master attic bedroom with ensuite shower room
 - Storage cellar and rear courtyard garden
 - Excellent location
 - Council Tax Band-A
 - EPC Rating-D
 - What3words:///fall.stores.manage
-



Offers Around

£265,000



Floorplan

45 WALKLEY ROAD

APPROXIMATE GROSS INTERNAL AREA = 108.0 SQ M / 1162 SQ FT
(INCLUDING EAVES)

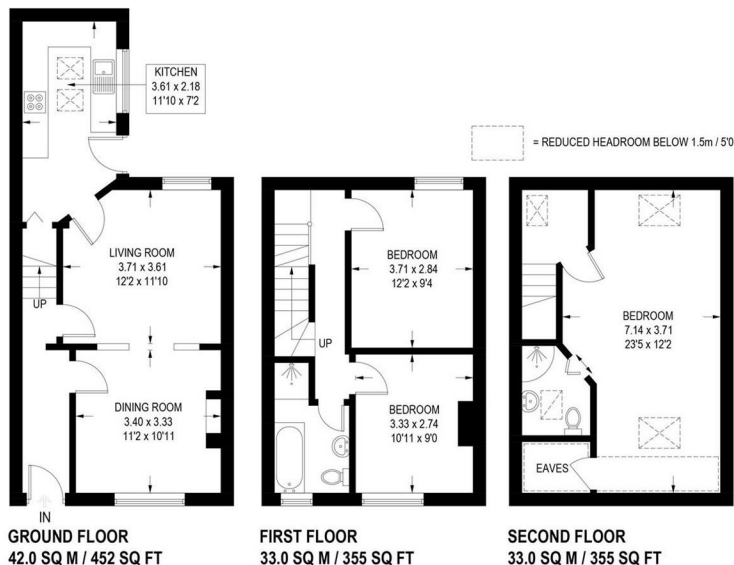


Illustration is for identification purposes only,
measurements are approximate, not to scale.

Spencer.

+44 (0)114 268 3682
info@spencersestateagents.co.uk

469 Ecclesall Road, Sheffield, S11 8PP
SpencersEstateAgents.co.uk

SpencersAgents
SpencersAgents
SpencersEstateAgents

All enquiries and negotiations conducted via the Spencers office. We are obliged under the Estate Agent Act 1991 to qualify all offers and an independent mortgage consultant will speak to you to substantiate your details. The particulars are set out as a general outline only for guidance and do not constitute part of an offer or contract. Measurements are given in good faith and believed to be correct. Any prospective buyer should satisfy themselves as to the correctness of all statements and should not rely on them as representation of fact. No person in the employment of Spencers has any authority to make or give representation or warranty whatever in relation to this property.

Viewing: Via the Agents
Spencers Agents Ltd, 469 Ecclesall Road, Sheffield S11 8PP | Registered in England No. 7565948